

Place to Visit Along the Izukyu Line

Izukyu Line Travel Guide



Resort 21 Black Ship Train



Tokaikan



Irozaki



Mt. Omuro



Kinmedai



Shirahama Shrine



Ryugukutsu Cave

伊豆急

Issued April 2026

Atami
Ito Line

Itō

Kawana

Minami-Itō

Futo

Jōgasaki-Kaigan

Izu-Kōgen

Izu-Ōkawa

Izu-Hokkawa

Izu-Atagawa

Katase-Shirata

Izu-Inatori

Imaihana-Kaigan

Kawazu

Inazusa

Rendaiji

Izukyū-Shimoda

Irozaki

136

Go!



A trip on the Izuky Line is filled with **unforgettable** experiences

Views



Gaze upon grand panoramas
Refresh your mind and body in nature!

Hot Springs



Luxuriate in hot springs
Enjoy the ultimate relaxation
surrounded by blue sea, sky, and nature.

Flavors



Try local food
Savor seasonal flavors!

History



Find out about the formation and
modernization of the Izu Peninsula
Learn from the past to understand the future!



Dog-Friendly spots



Photos from the summit!

Views from the park!

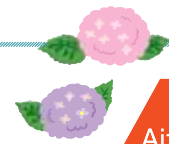
Shimoda Ropeway

To the Three Scenic Views of Izu and matchmaking spiritual spot

Enjoy a leisurely stroll through the air in a gondola. Watch as the scenery unfolds before you as you get higher, and gaze out on the townscape of Shimoda as well as the mountains and their abundant nature.

The summit of Mt. Nesugata: a National Park!?

Mt. Nesugata Nature Park is actually a designated National Park. It is an actual park in the sky with abundant nature and flowers blooming throughout the year.



Summit

Aizendo Temple

Popular as a spiritual "power spot" for matchmaking, fertility, and finding a good partner. Here you will find heart-shaped ema (votive tablets) and can partake in the "Nagomi-dama" ritual, where visitors make a wish and throw a small clay token. It is said that if the token passes through the ring and hits the rock, their wish will come true.



The gondola was designed by Eiji Mito-oka, who has worked on the design of many train carriages. To ensure it stands out against the greenery of Mt. Nesugata, the exterior of the gondola is royal blue to match The Royal Express sightseeing train that runs between Yokohama and Izuky Shimoda among other destinations. The interior uses natural wood to create a calming, sophisticated space.



Take your dog on the gondola with a special carrier.

Summit

Wan View Park

Take a moment out in the dog park with your dog. There are many photo spots unique to this park, and you are free to walk your dog on the footpath around Mt. Nesugata and its abundant nature to create memories to take home with you.

[Inquiries] Shimoda Ropeway Tel: 0558-22-1211

[Location] Higashihongo 1-3-2, Shimoda City, Shizuoka Prefecture

[Fare] Adults: ¥1,500 (junior high and up)
Children: ¥750 (elementary school and under)

*Up to one child younger than 6 per 1 adult may ride for free.



Ito Area
Izu-Kogen) Area

20 minutes by bus from Izu-Kōgen Station

8 Mt. Omuro



Standing 580m tall, the summit of Mt. Omuro is an ideal spot for photos with Mt. Fuji

With an elevation of 580m, this mountain is a government-designated natural monument. While walking to the summit is prohibited, visitors can take a dedicated lift to the summit. From the summit, visitors can enjoy a 360° panorama of Mt. Fuji, the Amagi Mountain Range, the Izu Islands, and Sagami Bay.

[Inquiries] Ike Tourism Development Tel: 0557-51-0258
[Location] Ike 672-2, Ito City, Shizuoka Prefecture

25 minutes on foot from Jōgasaki-Kaigan Station

9 Kadowaki Suspension Bridge



Experience a spectacular view and the sound of crashing waves from a bridge hung on a cliff face!

This suspension bridge stretches 48 meters over the sea at a height of 23 meters. It is hung from a precipice formed by an eruption of Mt. Omuro around 4,000 years ago, and its thrilling views make it a highly-popular spot among visitors.

[Inquiries] Ito City Tourism Information Center Tel: 0557-37-6105
[Location] Futo 842-65, Ito City, Shizuoka Prefecture

23 minutes by bus from Itō Station

3 Mt. Komuro



A magnificent 360° panoramic view of the ocean and sky!

With a lift to whisk you to the mountain's 321m summit, visitors can enjoy a fabulous 360° view of Mt. Fuji, Sagami Bay, Izu Oshima, and more. At the foot of the mountain is Mt. Komuro Park, where visitors can enjoy seasonal flowers. The azaleas, which reach full bloom in April each year, simply must be seen!

[Inquiries] Mt. Komuro Sightseeing Lift Tel: 0557-45-1444
[Location] Kawana 1428, Ito City, Shizuoka Prefecture

30 minutes by bus from Itō Station

4 Lake Ipeki



Known as the "Eye of Izu", this beautiful lake offers stunning seasonal views

Formed after an eruption around 100,000 years ago, this beautiful crater lake is known as the "Eye of Izu" and offers stunning seasonal views, and a lakeside footpath also allows visitors to enjoy a gentle stroll. The red leaves of the trees in autumn are reflected beautifully in the lake.

[Inquiries] Ito City Tourism Information Center Tel: 0557-37-6105
[Location] Yoshida 815-360, Ito City, Shizuoka Prefecture

7 minutes on foot from Itō Station

1 Tokaikan



Take time out to enjoy historic Showa era architecture and a hot spring experience

With a wooden structure built in the early Showa era (1926+), this traditional Japanese inn is preserved as a Tangible Cultural Property designated by the Ito City government and is open to the public. This precious building conveys the architectural tastes of artisans of the time to the present day. In addition to taking a look around the inside, visitors can also enjoy day trips to the hot spring.

[Contact] Tokaikan Tel: 0557-36-2004
[Location] Higashi-Matsubaracho 12-10, Ito City, Shizuoka Prefecture

5 minutes by bus or 20 minutes on foot from Itō Station

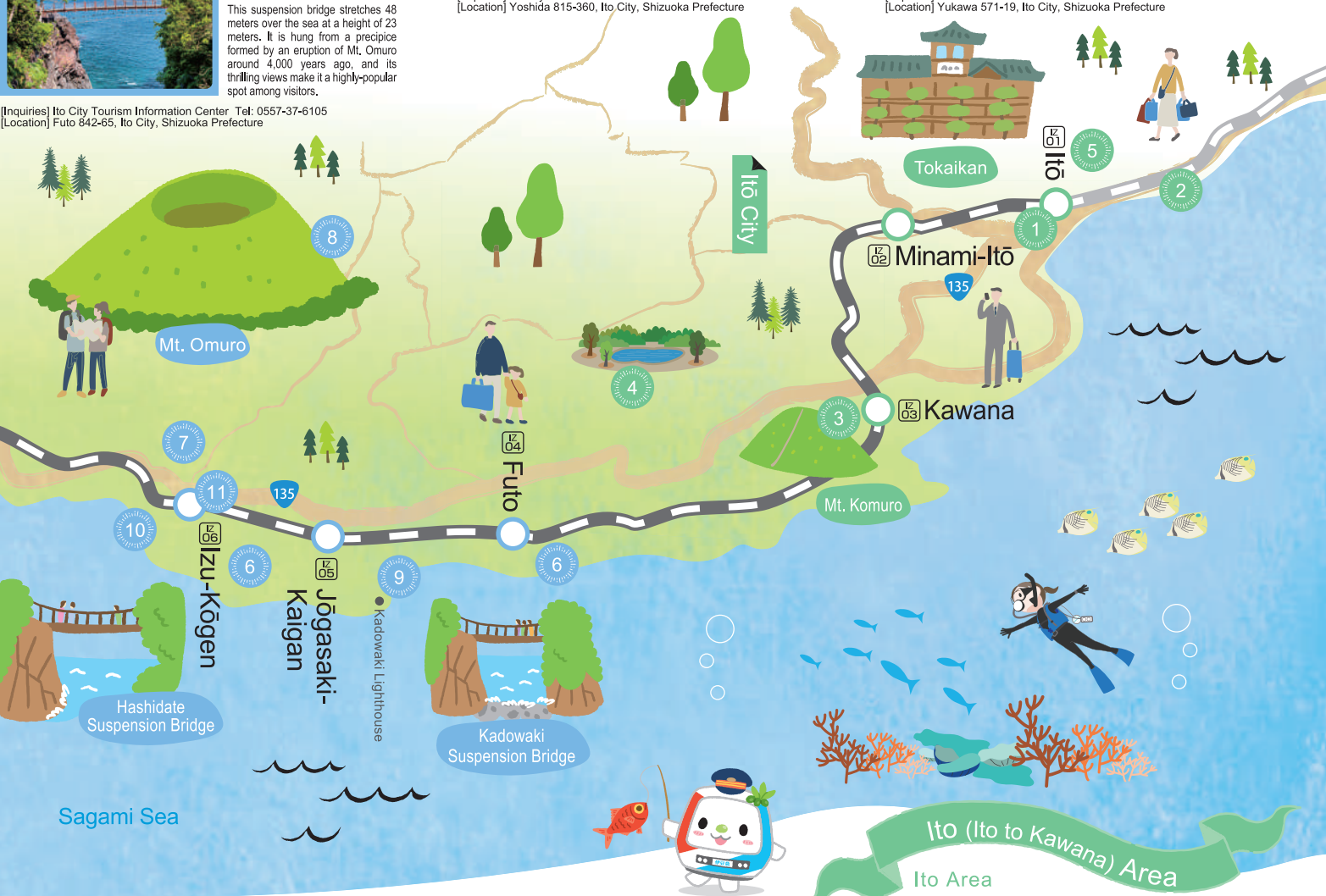
2 Ito Marine Town Roadside Station



All of the good things about Ito!

Shopping, restaurants, hot springs, a pleasure boat, and other attractions guarantee a fun-filled day for visitors to this sprawling site that hosts a range of stores brimming with the appeal of Ito. This roadside station was chosen by readers of a magazine as the one they most want to visit in 2010.

[Inquiries] Ito Marine Town Roadside Station Tel: 0557-38-3811
[Location] Yukawa 571-19, Ito City, Shizuoka Prefecture



20 minutes on foot from Izu-Kōgen Station

7 Hachimangu Kinomiya Shrine



Ryubintai (evergreen ferns) and Sennensugi (a 1000-year-old cedar tree) that are government-designated natural monuments and a must-see. This shrine is actually a combination of Hachimangu and Kinomiya Shrine, which originally existed separately. The forest on the grounds of the Hachimangu Kinomiya Shrine is a government-designated natural monument, and forms a power spot where visitors can see evergreen ferns, a 1000-year-old cedar tree, and other such natural attractions.

[Inquiries] Hachimangu Kinomiya Shrine Tel: 0557-53-2861
[Location] Yawatano 1, Ito City, Shizuoka Prefecture

For everyone from beginners to experts!!

6 Diving <Futo/Izu-Kogen>



A superb diving area with calm seas, a warm climate, and rich marine life

Dotted around the Ito area are diving spots with something for everyone, including beginners, offering all kinds of activities from snorkeling to full recreational diving. Feel free to get in touch!

[Inquiries] Ito City Tourism Information Center Tel: 0557-37-6105

54 participating stores in Ito

5 Ito Sweets Republic



Ito has the most confectionary stores per capita in Japan!

The city of Ito has the most confectionary stores per thousand inhabitants in Japan, and Ito Sweets Republic was created to promote Ito as a city of confectionary to the rest of Japan. There are numerous participating stores in the city, and some have special offers, so be sure to check them out!

[Inquiries] Ito Sweets Republic Office Tel: 0557-37-2500
[Location] Ginza Motomachi 6-11, Ito City, Shizuoka Prefecture



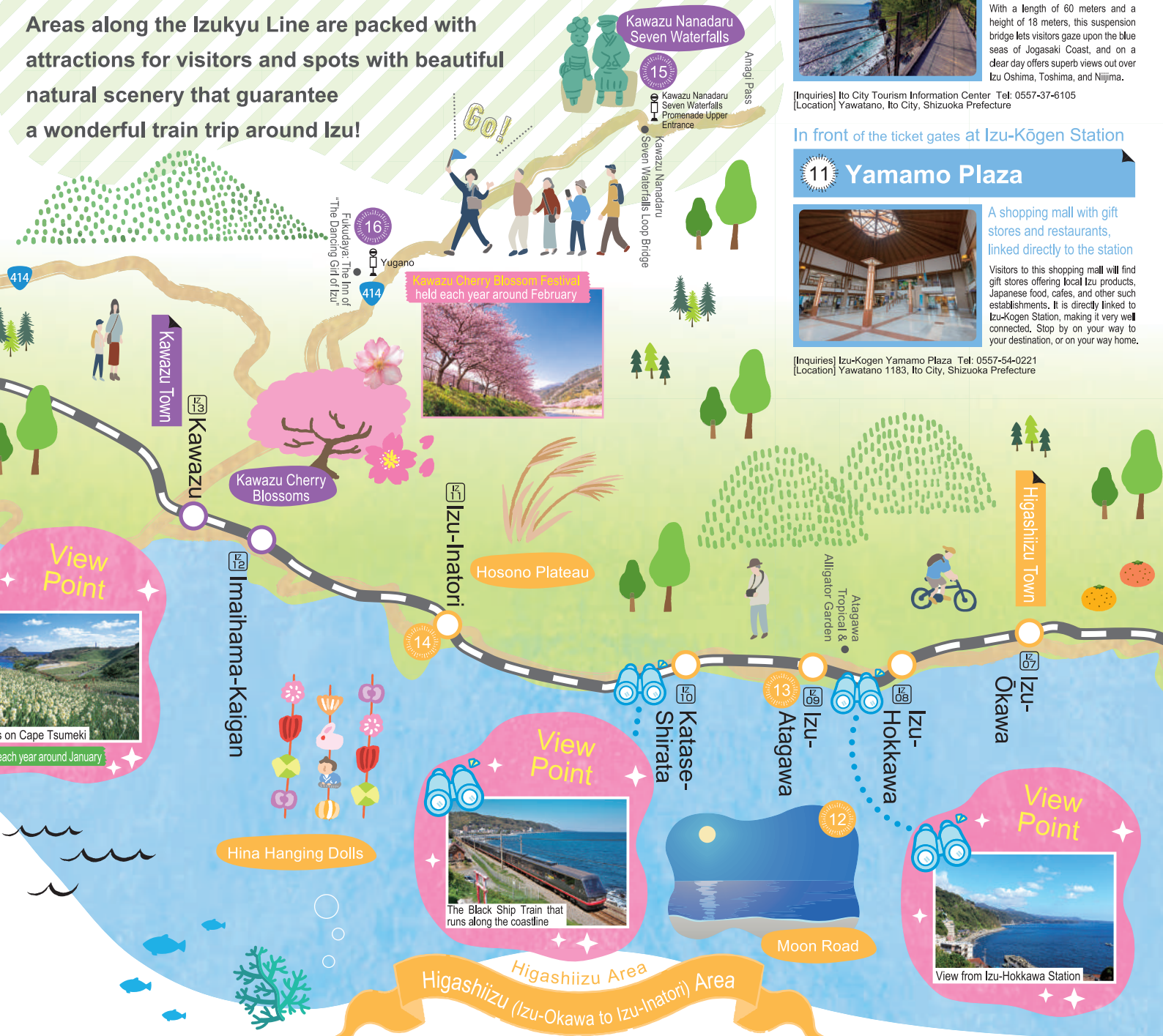
Place to Visit Along the Izukyu Line



Izu-Kōgen (Futo to Izu-Kōgen)

Izukyu Line Travel Guide

Areas along the Izukyu Line are packed with attractions for visitors and spots with beautiful natural scenery that guarantee a wonderful train trip around Izu!



15 minutes on foot from Izu-Kōgen Station

10 Hashidate Suspension Bridge

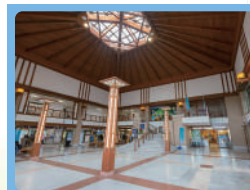


Enjoy the thrill and views offered by a 60m-long, 18m-high suspension bridge. With a length of 60 meters and a height of 18 meters, this suspension bridge lets visitors gaze upon the blue seas of Jogasaki Coast, and on a clear day offers superb views out over Izu Oshima, Toshima, and Niijima.

[Inquiries] Ito City Tourism Information Center Tel: 0557-37-6105
[Location] Yawatano, Ito City, Shizuoka Prefecture

In front of the ticket gates at Izu-Kōgen Station

11 Yamamo Plaza



A shopping mall with gift stores and restaurants, linked directly to the station

Visitors to this shopping mall will find gift stores offering local Izu products, Japanese food, cafes, and other such establishments. It is directly linked to Izu-Kogen Station, making it very well connected. Stop by on your way to your destination, or on your way home.

[Inquiries] Izu-Kogen Yamamo Plaza Tel: 0557-54-0221
[Location] Yawatano 1183, Ito City, Shizuoka Prefecture

11 minutes on foot from Izu-Inatori Station

14 Hinanoyakata Cultural Park



Izu-Inatori, the birthplace of hina hanging dolls

The display of hina hanging dolls as a prayer for children's happiness is a Japanese custom that dates back to the Edo era (1603 -). The dolls are handed down from parents to their children, and here you can see dolls embodying a range of hopes and dreams.

[Inquiries] Inatori Onsen & Ryokan Association Tel: 0557-95-2901
[Location] Inatori 1729, Higashiizu Town, Kamo District, Shizuoka Prefecture

1 minute on foot from Izu-Atagawa Station

13 The lights of Jiufen in Atagawa



Experience a night stroll illuminated by Taiwanese lanterns

Born from a desire to revive the vibrancy of Atagawa as a hot spring town, around 1,500 Taiwanese lanterns have been hung along its streets where their light produces a scene akin to a popular travel destination in Taiwan called Jiufen. The opportunity to experience the streets of an old hot spring town overflowing with exotic ambience is only on offer in Atagawa!

[Inquiries] "The lights of Jiufen in Atagawa" Town Development Association Tel: 0557-95-2167
[Location] Near Izukyu Izu-Atagawa Station

5 minutes on foot from Izu-Hokkawa Station

12 Moon Road



One of "Japan's 100 Famous Moons" lunar views! Great moon viewing for three days before and after a full moon

For three days before and after a full moon, a "moon road" is created by the moonlight reflected on the sea surface. It is said that a wish made to the moon road is always granted, and a wonderful moment spent here may make you feel this might just be true.

[Inquiries] Kitagawa Onsen & Ryokan Association Tel: 0557-23-3997
[Location] Near Kitagawa hot spring in Higashiizu Town, Kamo District, Shizuoka Prefecture

Minamiizu Area

Minamiizu Area

50 minutes by bus from Izukyū-Shimoda Station

23 Irozaki



A truly spectacular view from 100-meter-high sheer cliffs!

Located on the southernmost cape of the Izu Peninsula, this breathtaking view point is characterized by its rugged coastline and hosts a stretch of cliffs that reach 100 meters.

[Inquiries] Minamiizu Town Tourist Association Tel: 0558-62-0141
[Location] Irozaki, Minamiizu Town, Kamo District, Shizuoka Prefecture

Kawazu Area

Kawazu Area

Kawazu (Imaihama-Kaigan to Kawazu) Area

Around Kawazu Town

16 The Dancing Girl of Izu



The setting for Nobel Prize for Literature Winner Yasunari Kawabata's "The Dancing Girl of Izu"

The Dancing Girl of Izu is a short story first published in 1928 as a series in the magazine "Bungei Jidai". Many spots that appear in the story remain today, including the highways and trails where a group of traveling performers once journeyed.

[Inquiries] Kawazu Town Tourism Association Tel: 0558-32-0290

25 minutes by bus from Kawazu Station

15 Kawazu Nanadaru Seven Waterfalls



Full of negative ions! Get up close and personal with seven waterfalls!

The Kawazu Nanadaru Seven Waterfalls refers to seven waterfalls in the town of Kawazu. There is a footpath linking all of the seven waterfalls, making it a great place for a stroll.

[Inquiries] Kawazu Town Tourist Association Tel: 0558-32-0290
[Location] Nashimoto, Kawazu Town, Kamo District, Shizuoka Prefecture



20 minutes by bus from Izukyū-Shimoda Station

21 Ryugukutsu Cave



A wondrous cave with scenic beauty crafted by nature making it a sight to behold

The Ryugukutsu Cave has a giant hole in its ceiling, making it the largest skylight in the Izu Peninsula. The skylight has a heart shape when viewed from the footpath above, and this has made it popular as a "power spot for love."

[Inquiries] Shimoda City Tourist Association Tel: 0558-22-1531
[Location] Toji, Shimoda City, Shizuoka Prefecture

12 minutes on foot from Izukyū-Shimoda Station

19 Perry Road



An historic alleyway with namako walls and rows of traditional houses

This is the road that Commodore William Perry took to Ryosenji Temple for the signing of the appendix to the Japan-US Treaty of Peace and Amity at the end of the Edo era. Lining both sides of the streets are namako walls and rows of unique buildings that use Izu stone, making it a popular spot offering a taste of the past.

[Inquiries] Shimoda City Tourist Association Tel: 0558-22-1531
[Location] Shimoda City 3-chome, Shizuoka Prefecture

15 minutes by bus from Izukyū-Shimoda Station

17 Shirahama Shrine



Scenery spiritual Spot! The oldest shrine in Izu, boasting a long history

The oldest shrine in Izu, the history of Shirahama Shrine stretches back 2,400 years. With a backdrop of the blue sky and sea of Shirahama, the majestic and dynamic scene of a bright red torii gate on the edge of a cliff is a highly popular destination among visitors from both Japan and abroad.

[Inquiries] Shirahama Shrine Tel: 0558-22-1183
[Location] Shirahama 2740, Shimoda City, Shizuoka Prefecture

Shimoda Port lands the most Kinmedai in Japan!!

22 Kinmedai



Izu Shimoda lands more luxury Kinmedai fish than anywhere else in Japan!

With more Kinmedai landed than anywhere else in Japan, Shimoda City is home to a great many restaurants offering a range of Kinmedai dishes. In addition to classic simmered dishes, visitors can also enjoy shabu-shabu, seafood bowls, and grilled dishes made with Kinmedai.

[Inquiries] Shimoda City Tourism Association Tel: 0558-22-1531

1 minute on foot from Izukyū-Shimoda Station

20 Mt. Nesugata



One of the Three Scenic Views of Izu, offering an unmissable view of the Amagi Mountain Range from the summit

This mountain's name means "sleeping form" and comes from the fact that it gives the appearance of a sleeping woman when viewed from afar. It takes only three minutes by ropeway to get to the summit, where you can get a bird-eye view of Shimoda Port, the Izu Islands, and the magnificent Amagi Mountains.

[Inquiries] Shimoda Ropeway Tel: 0558-22-1211
[Location] Higashihongo 1-3-2, Shimoda City, Shizuoka Prefecture

15 minutes by bus from Izukyū-Shimoda Station

18 Shirahama Ohama Beach



White sand and pristine sea reminiscent of Hawaii!

Stretching between 700 and 800 meters, this expansive beach is one of the longest in Izu and presents to visitors a beautiful contrast between the white sand and emerald green sea.

[Inquiries] Shimoda City Tourist Association Tel: 0558-22-1531
[Location] Shirahama 2745-1, Shimoda City, Shizuoka Prefecture

Transportation IC cards can be used at all 16 stations ^(*) on the Izuikyū Line.



You can charge up your card using the machines at stations.

*1 Including JR Ito Station
*2 Including Monorail Suica and Rinkai Suica

This symbol indicates that a transport charge card can be used nationwide.

*"Kitaca" is a registered trademark of Hokkaido Railway Company. "PASMO" is a registered trademark of PASMO Co., Ltd. "Suica" is a registered trademark of East Japan Railway Company. "manaca" is a registered trademark of MIC Co., Ltd. and Nagoya Transportation Development Organization Co., Ltd. "TOICA" is a registered trademark of Central Japan Railway Company. "PiTaPa" is a registered trademark of SURUTTO KANSAI Co., Ltd. "ICOCA" is a registered trademark of West Japan Railway Company. "Hayakaken" is a registered trademark of the Fukuoka City Transportation Bureau. "nimoca" is a registered trademark of Nishi-Nippon Railroad Co., Ltd. "SUGOCA" is a registered trademark of Kyushu Railway Company. "Monorail Suica" is a registered trademark of Tokyo Monorail Co., Ltd. "Rinkai Suica" is a registered trademark of Tokyo Waterfront Area Rapid Transit, Inc.

Great convenience for searching information, buying tickets, and more!



Helping you explore Izu!

Sightseeing Information

Coupons

E-Tickets Purchasing



Add me as a friend on LINE to use me!



Available for boarding vacant ordinary car seats on the limited express "Odoriko"

Unlimited rides on the Izuikyū Line for one day.

Izu Mankitsu 1-Day Pass

On sale starting the day before (Excluding some locations)

An unlimited ride ticket valid on the Izuikyū Line between Ito Station and Izuikyū-Shimoda Station. On sale from April 1, 2026, to January 31, 2027

Adult **JPY 3,000** Child **JPY 1,000**

*You may not use the seats that have already been reserved.
*Cash only. Credit cards are not accepted. (Excluding some locations.)
*Please check the Izuikyū website for details.



"Kinme Ticket"

A great-value set that includes a one-day unlimited ride pass between Izu-Kōgen and Izuikyū-Shimoda including a meal ticket for kinmedai dishes.



On sale from April 1, 2026, to March 25, 2027

Unlimited Ride Pass between Izu-Kōgen and Izuikyū-Shimoda + Izuikyū Kinme dishes Meal Ticket
Adult **JPY 3,980** Child **JPY 2,980**

*Prices shown in yen

Distance (km)	Standard passenger fare																Fare with physical ticket *Adults
	Ito	190	370	560	650	750	1,070	1,170	1,170	1,270	1,380	1,580	1,580	1,770	1,860	1,860	
2.0	185	Minami-Ito	250	470	560	650	960	1,070	1,170	1,170	1,380	1,480	1,480	1,680	1,770	1,860	
6.1	369	242	Kawana	280	370	470	750	860	960	960	1,170	1,380	1,380	1,580	1,680	1,680	
11.5	554	462	277	Futo	190	250	470	560	650	750	960	1,170	1,170	1,380	1,480	1,580	
13.9	646	554	369	185	Jōgasaki-Kaigan	190	370	470	560	650	860	1,070	1,070	1,270	1,380	1,480	
15.9	750	646	462	242	185	Izu-Kōgen	250	370	470	560	750	960	960	1,170	1,270	1,380	
20.9	1,061	958	750	462	369	242	Izu-Ōkawa	190	190	280	470	650	750	960	1,170	1,170	
22.9	1,164	1,061	853	554	462	369	185	Izu-Hokkawa	190	190	370	560	650	860	1,070	1,170	
24.3	1,164	1,164	958	646	554	462	185	185	Izu-Atagawa	190	280	470	560	860	960	1,070	
26.1	1,268	1,164	958	750	646	554	277	185	185	Katase-Shirata	250	470	470	750	860	960	
30.3	1,372	1,372	1,164	958	853	750	462	369	277	242	Izu-Inatori	190	250	560	650	750	
34.2	1,579	1,476	1,372	1,164	1,061	958	646	554	462	462	185	Imaihama-Kaigan	190	370	470	560	
35.3	1,579	1,476	1,372	1,164	1,061	958	750	646	554	462	242	185	Kawazu	280	470	560	
40.7	1,764	1,672	1,579	1,372	1,268	1,164	958	853	853	750	554	369	277	Inazusa	190	250	
43.4	1,856	1,764	1,672	1,476	1,372	1,268	1,164	1,061	958	853	646	462	462	185	Rendaiji	190	
45.7	1,856	1,856	1,672	1,579	1,476	1,372	1,164	1,164	1,061	958	750	554	554	242	185	Izuikyū-Shimoda	

*Children's fare and limited express fare are half the adult's fare. Amounts of less than ¥10 are rounded up on the Izuikyū Line, and rounded down on JR lines. The green fare for children is the same as for adults. However, if a transport charge card is used, the fare is half that of the fare for an adult when using a transport charge card (fractions of a yen are rounded down).

*The times shown are approximate. Times may vary depending on operational status and weather.

Distance/Time/Stations	Distance (km)	Time (mins)
Ito	2.0	3 mins.
Minami-Ito	4.1	5 mins.
Kawana	5.4	6 mins.
Futo	2.4	3 mins.
Jōgasaki-Kaigan	2.0	3 mins.
Izu-Kōgen	5.0	5 mins.
Izu-Ōkawa	2.0	3 mins.
Izu-Hokkawa	1.4	2 mins.
Izu-Atagawa	1.8	3 mins.
Katase-Shirata	4.2	5 mins.
Izu-Inatori	3.9	4 mins.
Imaihama-Kaigan	1.1	2 mins.
Kawazu	5.4	5 mins.
Inazusa	2.7	4 mins.
Rendaiji	2.3	3 mins.
Izuikyū-Shimoda	1	1 min.
Shin-Shimoda Ropeway	4	4 mins.
Mt. Nesugata		

*Fares shown are current as of April 2026.

伊豆急行株式会社 Tel: 0557-53-1116

9:30 to 12:00, 13:00 to 17:30 *Excluding weekends, national holidays, and New Year

